

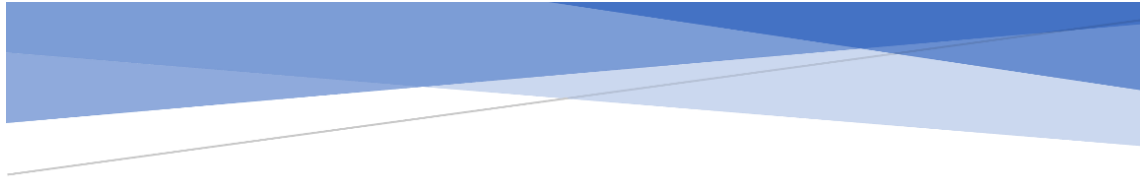


Remote Flow Cytometry Analysis of Hematological Malignancies

PLASMA CELL DISORDERS

MM and MGUS

www.Interpflow.com
info@interpflow.com



Plasma cell disorders are a group of diseases most frequently characterized by the presence of clonal (neoplastic) plasma cells in the bone marrow. It includes different disease entities among which multiple myeloma (MM) and monoclonal gammopathy of undetermined significance (MGUS) are the most prevalent and representative entities (25)

Multiparameter flow cytometric immunophenotyping together with other clinical, radiological, biochemical and hematological data, provides relevant information for the diagnosis and classification of PCD. At the same time, flow cytometry contributes to prognostic stratification and minimal residual disease (MRD) monitoring of myeloma patients after therapy (26,27).

The most relevant clinical information provided by flow cytometry relies on the identification and enumeration of aberrant versus normal/polyclonal BM plasma cells: a higher ratio between both populations is associated with malignancy.

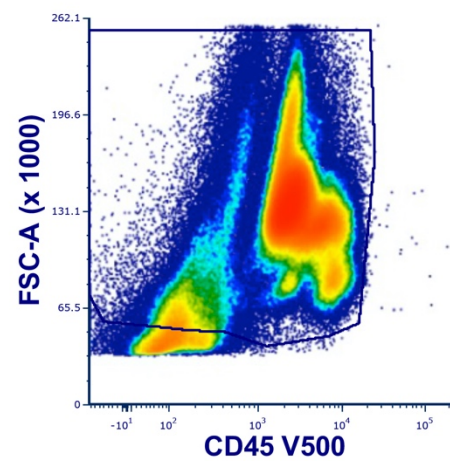
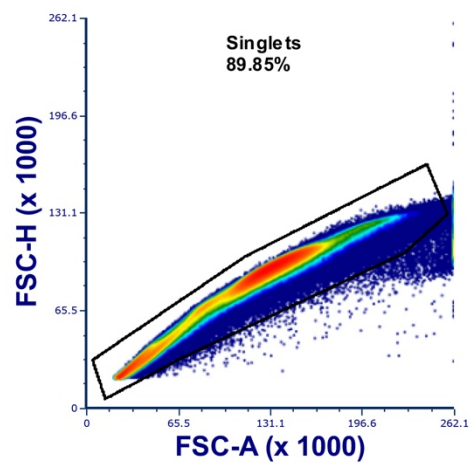
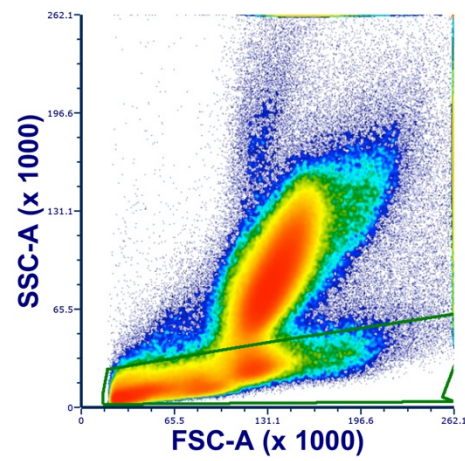
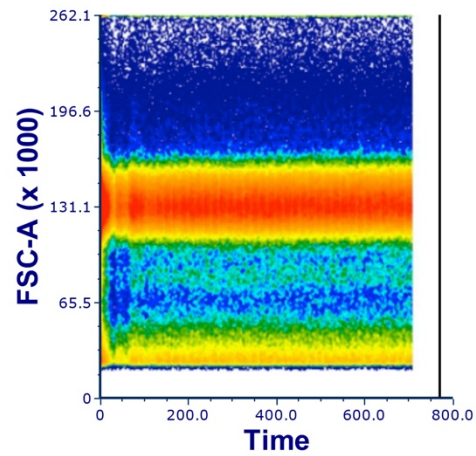
Example of treated MM, that show a mix of clonal (cytoplasmic Kappa+) and normal plasma cells.



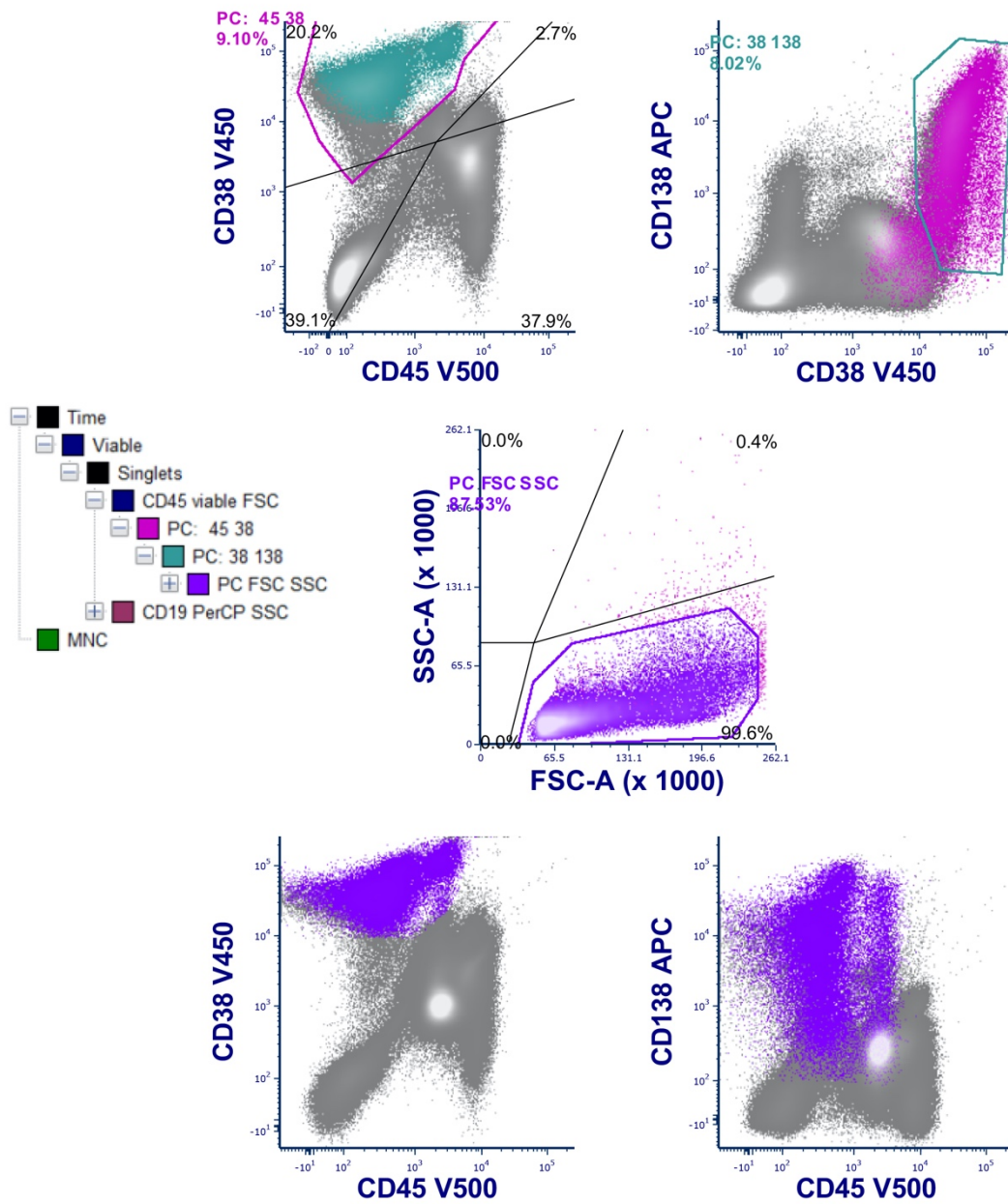
Cyto L/ Cyto K/ CD19/CD56/CD138/CD20/CD38+CD38-ic/ CD45



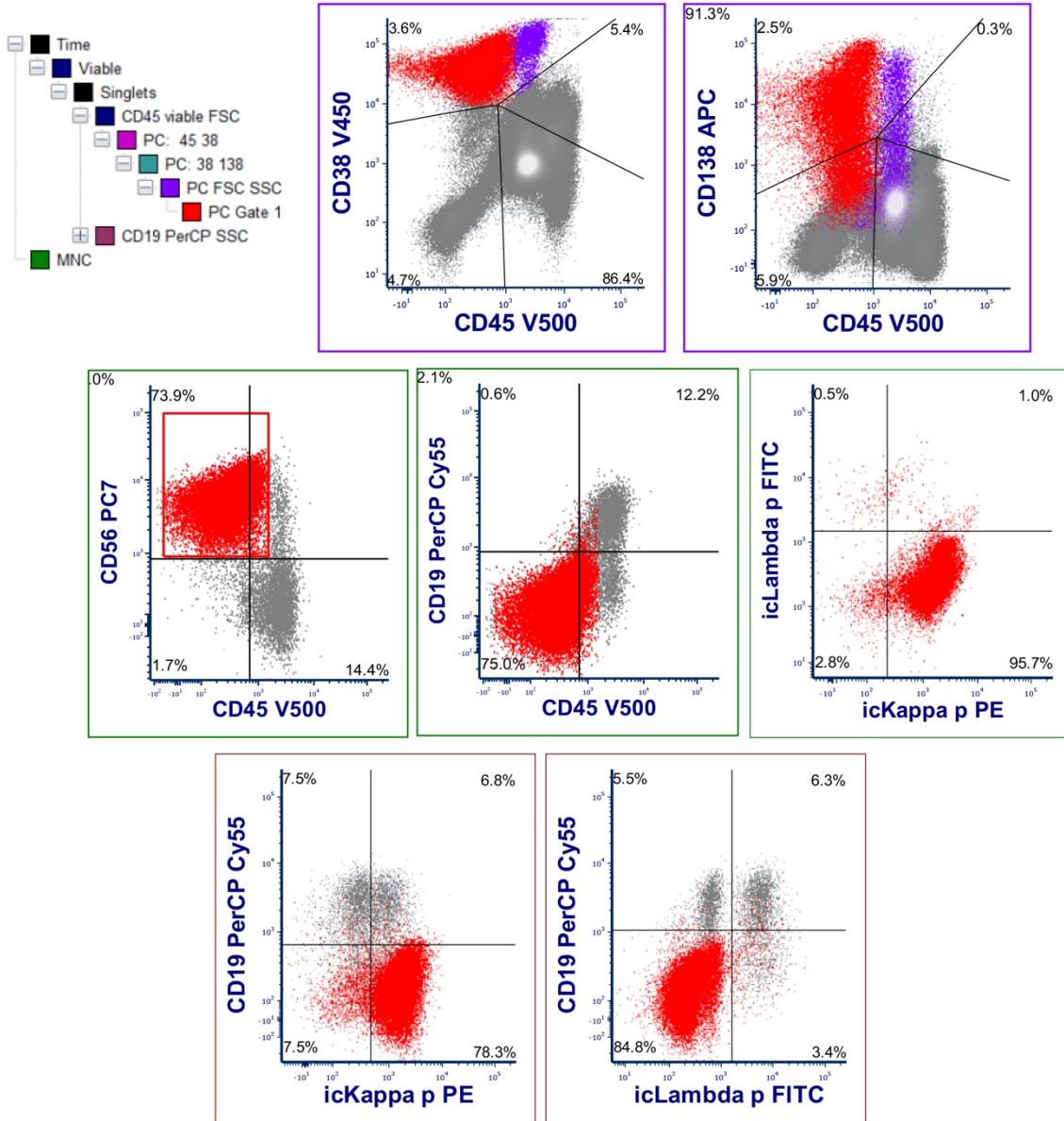
INITIAL GATING

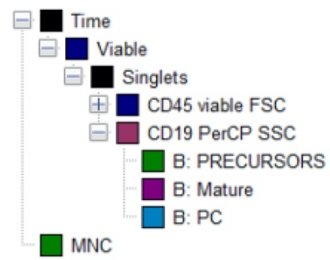


PLASMA CELLS GATING



PLASMA CELLS CHARACTERIZATION





CD19+ CELLS phenotype

